

# TM22 LEVER ACTION



## USERS MANUAL



**WARNING: READ THE INSTRUCTIONS AND SAFETY PRECAUTIONS IN THIS MANUAL CAREFULLY BEFORE USING THE FIREARM.**

# ROCK ISLAND ARMORY

## **USERS MANUAL TM22 LEVER ACTION** SAFETY, INSTRUCTION AND PARTS MANUAL



As a responsible owner of this firearm, you must read the instructions and warnings in this manual carefully. Before using this firearm, make sure you understand thoroughly the contents of this manual.

This manual must always be in the firearms carrying case whenever the owner/user brings it or when it transfers ownership. A copy of this manual is available upon request from:

**ARMSCOR PRECISION INTERNATIONAL**  
150 N Smart Way, Pahrump NV 89060  
E-mail: [support@armscor.com](mailto:support@armscor.com)

# TABLE OF CONTENTS

1 Statement of Liability

1 State-By-State Warnings

2 Safety Precautions

3 Important Warnings

## HEALTH&SAFETY

4 Tech Specs

5 Basic Parts

6 Exploded View

## ABOUT THE FIREARM

Operating Instructions 7-8-9

Ordering Parts 10

Warranty 11

## MAINTENANCE



### STATEMENT OF LIABILITY

This shotgun is classified as a firearm or dangerous weapon. It is expressly understood that we assume no liability for its resale or unsafe handling under local laws and regulations. Armscor assumes no responsibility for physical injury or property damage resulting from either intentional or accidental discharge, or for the function of the firearm subjected to influence beyond their control. Armscor will honor no claims which may result from careless handling, unauthorized adjustments, defective or improper ammunition, corrosion or neglect. Examine your firearm carefully at the time of purchase. It should be forwarded immediately to the factory or its sales agent if any adjustment of any kind is required.

### State-By-State Warnings



#### CALIFORNIA STATE WARNING

*CHILDREN ARE ATTRACTED TO AND CAN OPERATE FIREARMS THAT CAN CAUSE SEVERE INJURIES OR DEATH. PREVENT CHILD ACCESS BY ALWAYS KEEPING FIREARMS LOCKED AWAY AND UNLOADED WHEN NOT IN USE. IF YOU KEEP A LOADED FIREARM WHERE A CHILD OBTAINS AND IMPROPERLY USES IT, YOU MAY BE FINED OR SENT TO PRISON. IT IS UNLAWFUL TO USE A MAGAZINE WITH A CAPACITY OVER 10 ROUNDS.*



#### MASSACHUSETTS STATE WARNING

*IT IS UNLAWFUL TO CARRY ANY MAGAZINE OR BELT WHICH HOLDS MORE THAN TEN ROUNDS, UNLESS AUTHORITY IS GRANTED BY THE BOSTON POLICE COMMISSIONER. IT IS UNLAWFUL TO STORE OR KEEP A FIREARM, RIFLE, SHOTGUN OR MACHINE GUN IN ANY PLACE UNLESS THAT WEAPON IS EQUIPPED WITH A TAMPER RESISTANT SAFETY DEVICE OR IS STORED OR KEPT IN A SECURELY LOCKED CONTAINER.*



#### NEW YORK STATE WARNING

*IT IS UNLAWFUL TO CARRY ANY MAGAZINE OR BELT WHICH HOLDS MORE THAN SEVEN ROUNDS, UNLESS AUTHORITY IS GRANTED BY THE STATE OF NEW YORK. THE USE OF A LOCKING DEVICE OR SAFETY LOCK IS ONLY ONE ASPECT OF RESPONSIBLE FIREARMS STORAGE FOR INCREASED SAFETY, FIREARMS SHOULD BE STORED UNLOADED AND LOCKED IN A LOCATION THAT IS BOTH SEPARATED FROM THEIR AMMUNITION AND INACCESSIBLE TO CHILDREN AND OTHER UNAUTHORIZED PERSONS.*

## 02 | SAFETY PRECAUTIONS

Safety must be the first and constant consideration of every person who handles firearms and ammunition. The person with a firearm in his possession has an important responsibility. He/She must know how to use his/her firearm safely:

1. Always keep the muzzle pointed at a safe direction. Watch the muzzle at all times. Never point a gun, accidentally or intentionally, at any person or anything you do not intend to shoot. Identify the target before shooting; do not shoot at sounds.
2. Always treat a gun as if it is loaded – it may be!
3. Keep your finger off the trigger while operating the action and at all other times until you are ready to shoot.
4. Keep the safety “on” or in the “safe” position at all times until you are ready to fire. Do not rely on your gun’s safety, the safety on any gun is a mechanical device and is not intended as a substitute for common sense or safe gun handling.
5. Learn how your gun functions and handles. If you do not thoroughly understand the proper use and care of your gun, seek the advice of someone who is knowledgeable.
6. Do not alter or modify any part of the firearm.
7. Store guns unloaded, separate from any ammunition, and out of the reach of children.
8. Be sure the barrels is clear of any obstructions before loading. Make it a habit to check the barrel every time before loading.
9. Be sure you have and use the proper ammunition.
10. Wear protective shooting glasses, adequate ear protection and gloves when shooting.
11. Never climb or jump over anything, such as a tree, fence, or ditch, with a loaded gun. Open the barrel, remove the shells and hand the gun to someone else or place it on the ground on the other side of the obstacle before crossing it yourself. Do not lean a gun against a tree or other object; it could fall and possibly discharge.

12. Do not shoot at a hard surface or at water. Bullet and shot can ricochet or bounce off and travel in unpredictable directions with great velocity.

13. Never transport a loaded gun. Do not place a loaded gun into a vehicle. The gun should be unloaded and placed into a case when not in use.

14. Never consume intoxicating beverages and/or drugs before or during shooting.

### WARNING

DO NOT ATTEMPT TO USE ANY FIREARM WITHOUT HAVING A COMPLETE UNDERSTANDING OF ITS PARTICULAR CHARACTERISTICS AND SAFE USE. READ AND UNDERSTAND THIS MANUAL CAREFULLY BEFORE USAGE OF YOUR SHOTGUN.

### WARNING

YOU SHOULD NEVER DEPEND ON A SAFETY MECHANISM OR ANY OTHER MECHANICAL DEVICE TO JUSTIFY CARELESS AND IMPROPER HANDLING.

### WARNING

THIS FIREARM WAS MANUFACTURED TO PERFORM PROPERLY WITH THE ORIGINAL PARTS AND MAGAZINES AS DESIGNED. PLEASE MAKE SURE ANY PARTS YOU BUY ARE INSTALLED CORRECTLY AND THAT NEITHER REPLACEMENTS NOR ORIGINALS ARE ALTERED OR CHANGED. PUTTING A FIREARM TOGETHER INCORRECTLY OR WITH MODIFIED PARTS CAN RESULT IN DAMAGED FIREARM, DANGER, AND INJURY OR DEATH. ANY MODIFICATIONS TO FIREARM WILL VOID FACTORY WARRANTY.

## 03 | IMPORTANT WARNINGS

### WARNING

CHILDREN ARE ATTRACTED TO FIREARMS, AND MIGHT BE ABLE TO OPERATE THEM, THEY CAN CAUSE SEVERE INJURIES AND EVEN DEATH, TO THEMSELVES OR OTHERS. PREVENT CHILDREN FROM ACCESS, ALWAYS KEEP YOUR FIREARMS LOCKED AWAY, UNLOADED AND OUT OF REACH OF CHILDREN WHEN NOT IN USE AT ANY TIME.

### WARNING

THE FIREARM SHOULD BE STORED IN ROOMS WITH A DRY ATMOSPHERE AND MINIMUM HUMIDITY. IT SHOULD NOT BE STORED ENCASED IN LEATHER OR ANYTHING THAT WILL ATTRACT AND HOLD MOISTURE, CAUSING IT TO RUST.

### WARNING

DO ALL PROCEDURES (DISASSEMBLY, CLEANING AND OTHER MAINTENANCE) ONLY WHEN THE FIREARM IS UNLOADED. BE SURE THAT THE MAGAZINE TUBE, RECEIVER AND CHAMBER ARE EMPTY WHILE YOU ARE PROCEEDING. CHECK EJECTION PORT, LOADING PORT AND CHAMBER VISUALLY.

### WARNING

ALL PRODUCTS HAVE 3" (76MM) CHAMBERS (EXEPT OTHERWISE STATED). YOU CAN SEE MARKS ABOUT GAUGES AND CHAMBER LENGTH ON THE GUN. EVERY SHOTGUN HAS PASSED DURABILITY TEST WITH SPECIAL HIGH PRESSURE CARTRIDGES.

### WARNING

WHEN STORING THE GUN FOR A PROLONGED PERIOD OF TIME, IT IS NECESSARY TO OIL IT HEAVILY WITH AN ACID-FREE LUBRICANT. THE EXTERNAL PARTS MUST BE COATED WITH AN ANTI-RUST OIL OR GREACE TO PREVENT MOISTURE CAUSING THE PARTS TO RUST AND MALFUNCTION. BEFORE USAGE, THE SHOTGUN MUST BE CLEANED AND WIPED DRY AGAIN.

## 04 | TECH SPECS

Model	<b>TM22 LEVER ACTION</b>
Caliber	.22LR
Action	Lever Action
Capacity	10 Rounds
Barrel Length	457mm / 18" - 500mm / 20"
Overall Length	914mm / 36" - 980mm / 38.5"
Overall Width	40mm / 1.57" - 57mm / 2.25"
Overall Height	120mm / 4.72" - 127mm / 5"
Front & Rear Sight	Front Sight & Picatinny Rail
Weight, Empty	2.4 kg / 5.3 lbs
Weight, Loaded	2.52 kg / 5.55 lbs
Finish	Matte (Parkerized Steel / Anodized Aluminum)
Stock	Walnut / Synthetic
Thread	½ x 28 UNEF

### CALIBER



.22LR



## 05 | BASIC PARTS

P.NO	PART NAME	P.NO	PART NAME	P.NO	PART NAME
1	Barrel with Receiver	26	Lever	51	Synthetic Forend
2	Trigger	27	Bolt	52	Band
3	Trigger Pin	28	Firing Pin Spring	53	Band Screw
4	Trigger Housing	29	Firing Pin	54	Band Top Screw
5	Internal Trigger	30	Firing Pin Retaining Pin	55	Barrel Band
6	Internal Trigger Spring	31	Extractor Spring	56	Barrel Band Screw
7	Internal Trigger Pin	32	Extractor	57	Front Sight
8	Trigger Housing Bushing	33	Extractor Pin	58	Front Sight Screw
9	Safety	34	Hammer Slide	59	Barrel Nut
10	Safety Pin	35	Hammer Slide Spring	60	Synthetic Stock
11	Safety Spring	36	Hammer Slide Screw Cao	61	Magazine Body 10rd
12	Trigger Housing Bushing Pin	37	Hammer	62	Magazine Follower
13	Trigger Housing Pin	38	Hammer Screw	63	Magazine Spring
14	Trigger Housing Pin	39	Follower	64	Magazine Base Plate Lock
15	Ejector	40	Follower Screw	65	Magazine Base Plate
16	Ejector Pin	41	Screw Cap		
17	Magazine Catch	42	Lever Screw		
18	Lever Pin	43	Lower Cap Front Screw		
19	Lever Spring	44	Picatinny Rail		
20	Lever Locking Cap	45	Picatinny Rail Screw		
21	Magazine Catch Spring	46	Rear Sight		
22	Magazine Catch Screw	47	Rear Sight Screw		
23	Lower Cap Screw	48	Rear Sight Spring		
24	Magazine Release	49	Rear Sight Pin		
25	Magazine Release Screw	50	Magazine Tube		

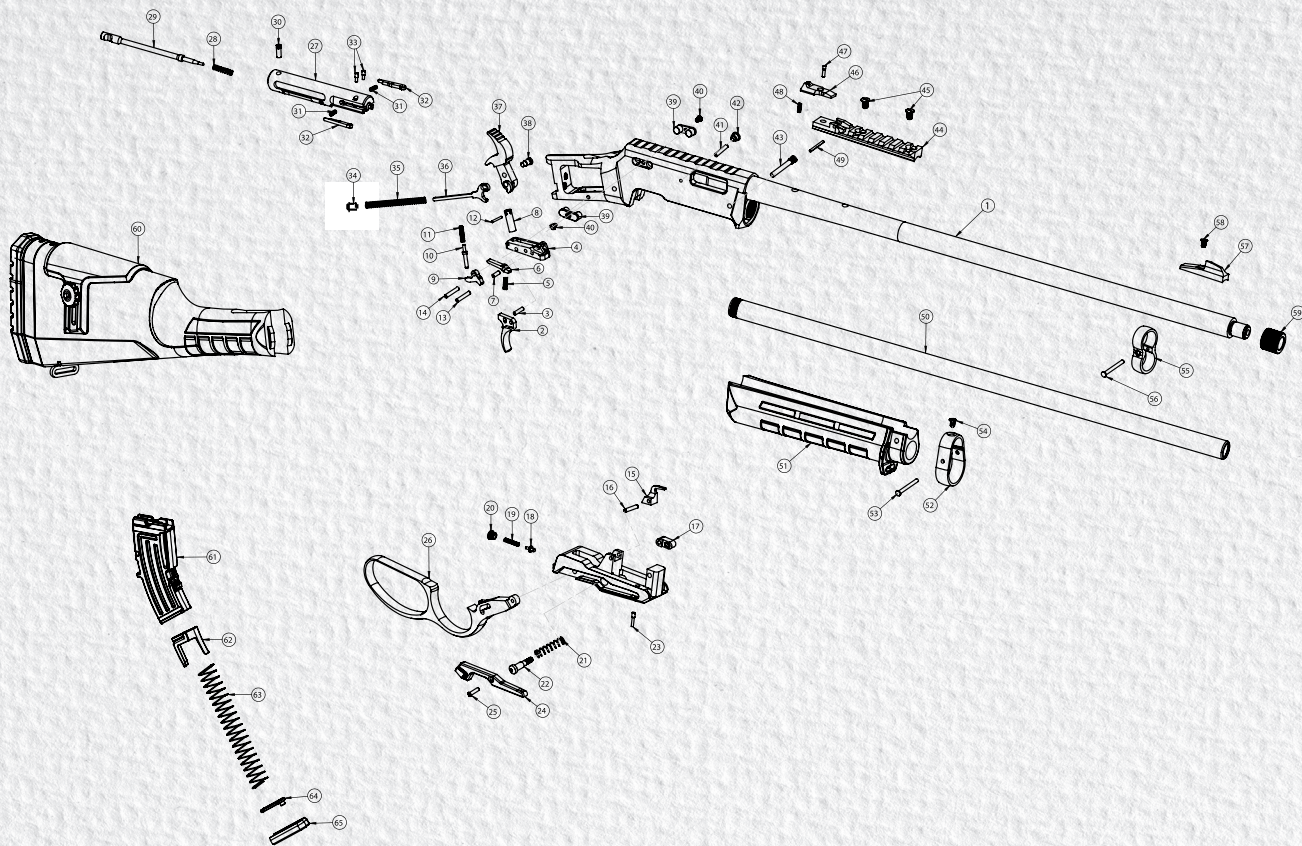
**Note:**

Some models will vary from exploded view.

\*Barrel, Receiver and Picatinny Rail



# 06 | EXPLODED VIEW



### LOADING THE FIREARM

- 1) Press down on the follower with the thumb of one hand, and then feed the round into the magazine, tuck each round under the feed lips and then move on.
- 2) Insert the fully loaded magazine into your rifle and ensure it properly engaged.



- 3) Pull the lever down, this action forces the firing pin and bolt backwards and a cartridge will lift up into the chamber.



- 4) Close the lever.



### UNLOADING THE FIREARM

- 1) Pull the lever down, if there's an empty cartridge in the chamber, it will eject.
- 2) Press the magazine release button to remove the magazine from the rifle.



### SAFETY SYSTEM

- 1) When the lever is pulled down, the safety is in position.
- 2) If the lever isn't closed completely the safety will be on.



- 3) When the lever is completely closed, the lever will push the safety and changes it to off position.

- 4) Pull the trigger and drop the hammer slowly by keeping it with your thumb finger. (Release the trigger by taking the finger completely off of it as the hammer beginning to be lowered)



## CLEANING THE FIREARM

Drip an oil to the trigger system as shown.



Lubricate the Slide from both sides.

Wipe the bolt clean of any debris with solvent and a patch or small rag. Lightly oil bolt.



Lubricate the carrier and trigger guard plate

Clean the bore of the barrel by using a cleaning rod.



## ORDERING PARTS

Visit RIA website to browse, learn more about and purchase parts and ammunition for all of your Rock Island Armory products.



[www.advancedtactical.com](http://www.advancedtactical.com)



ARMSCORPRECISION



ARMSCORPRECISION



ROCKISLANDARMORY



ARMSCORRIA

### WARRANTY REGISTRATION

Armcor's warranty covers its firearms and parts. We offer limited lifetime warranty on our products for their intended purpose. As with any product, abuse, gunsmithing by an unqualified person and normal wear and tear are excluded. Additionally, if the firearm was modified and/or repaired by an unqualified gunsmith without permission from Armcor, then the warranty will be void. If warranty work should be required, return the firearm to the address listed below. There is no refund for the shipping cost. Gunsmithing services are available by registered Armcor Gunsmithers. Please email the address below.

To register your firearm, please go to [www.rockislandarmory.com/support-center/warranty/](http://www.rockislandarmory.com/support-center/warranty/) and complete online warranty form. In comments section, write warranty registration and press submit. You can also go to [www.rockislandarmory.com](http://www.rockislandarmory.com) and press warranty section at the bottom.

**Armcor Precision International**  
**150 North Smart Way**  
**Pahrump, NV 89060**  
**Email: [support@armcor.com](mailto:support@armcor.com)**

For more information on warranty, visit [www.rockislandarmory.com](http://www.rockislandarmory.com), or email [support@armcor.com](mailto:support@armcor.com)

### IMPORTANT WARRANTY INFORMATION

Our Rock Island Army shotguns are warranted to function only with Factory Ammo and the Original Factory Magazine. Use of Handloads is not covered in Warranty of Repair for the function of the Firearm.

DUE TO THE FIT AND TIGHTNESS OF FIREARM, RIA RECOMMENDS A BREAK-IN PERIOD OF 500 ROUNDS.

#### **THIS IS HOW YOU VOID YOUR WARRANTY**

- \* Refinishing your RIA firearm
- \* Misuse, Mishandling, Dropping your RIA Firearm
- \* Firing Remanufactured or Reloaded Ammunition
- \* Not properly reassembling your RIA Firearm resulting in damage, ie reverse plugs!
- \* Any addition of after market parts
- \* Unauthorized repairs done by any other than Rock Island Army

#### **LIMITS ON WARRANTY (will not cover)**

- \* Finish, Holster wear, Scratches, Chemical damage
- \* After Market Magazines
- \* Damage to Factory Magazines
- \* Sights not installed by Rock Island Army
- \* Recoil Springs

WE RESERVE THE RIGHT TO CHARGE FOR LABOR, PARTS AND SHIPPING TO RETURN YOUR RIA FIREARM BACK TO FACTORY SPECIFICATIONS IF IT HAS BEEN ALTERED.



# RIA

IMPORTS

[WWW.ROCKISLANDARMORY.COM](http://WWW.ROCKISLANDARMORY.COM)

06/2023